



*Modular & Compact Solutions*

## **Anash** *Solutions for Modern Facilities*



- \* Innovative Designs \* Unique Features \* Various Styles \* Tough & Thoughtful*
- \* Global Standards \* Aesthetical Appeal \* Optimum Space Utilisation*

*Anash Cubicles.....What A Relief!*



# Restroom Cubicles, Partitions & Lockers



Toilet Cubicles /Partitions



Restroom / Changeroom Lockers



Urinal Partitions

*Cost Effective Modern Concept.....  
.....for Relaxed Ambience in Restroom*



- Made from Compact Laminate Decorative Panel
- Apt for High Humidity Environments
- Anti Bacterial, Anti Fungal
- Perfect for Sensitive and high traffic Areas
- Versatile, Functional, Robust, Easy To Clean
- Resistant to: Impact/Water/Scratch/Termite  
Abrasion/Graffiti/Chemical

## Cubicle Options

### 12 mm thick Laminate Sheet Panels on Legs



*Modular & Compact Solutions*

System	Model	Board - Make	Hardware	Channels	Colour
Top Rail	ARC-1201	HPL – STYLAM	S.S. 304/ Legs S.S. 316	S.S.	Matt
Top Rail	ARC-1202	HPL – STYLAM	S.S. 304/ Legs S.S. 316	Aluminium	Anodised
Top Rail	ARC-1203	HPL – STYLAM	Nylon/ Legs	Aluminium	Black <i>Powder Coated</i>
Top Rail	ARC-1204	HDF –Action Boilo	S.S. 304/ Legs S.S. 316	S.S.	Matt
Top Rail	ARC-1205	HDF –Action Boilo	S.S. 304/ Legs S.S. 316	Aluminium	Anodised
Top Rail	ARC-1206	HDF –Action Boilo	Nylon/ Legs	Aluminium	Black <i>Powder Coated</i>
S.S. Pipe Rail	ARC-1207	HPL – STYLAM	S.S. 304/ Legs S.S. 316	S.S.	Matt

# Cubicles – Model No. ATC-1206

BWP-HDF Laminate Sheets – Action BOILO



Nylon Legs



Top Rail & Channels  
Aluminium Black



Nylon Hardware



# Cubicles – Model No. ATC-1202

HPL Laminate Sheets – STYLAM



*Modular & Compact Solutions*



Privacy indicator/Knob



SS Coat hook



Anodizing aluminum Top rail



Adjustable SS Legs

# Cubicles - Model No. ATC-1207

BWP-HDF Laminate Sheets – Action BOILO



*Modular & Compact Solutions*



SS Top rail



Privacy indicator/Knob



Coat hook



Adjustable SS Legs

# Cubicles – Model No. ATC-1202-B

[Doors Opening Outside]



*Modular & Compact Solutions*





# Project Files.....





*Modular & Compact Solutions*





*Modular & Compact Solutions*



*Modular & Compact Solutions*

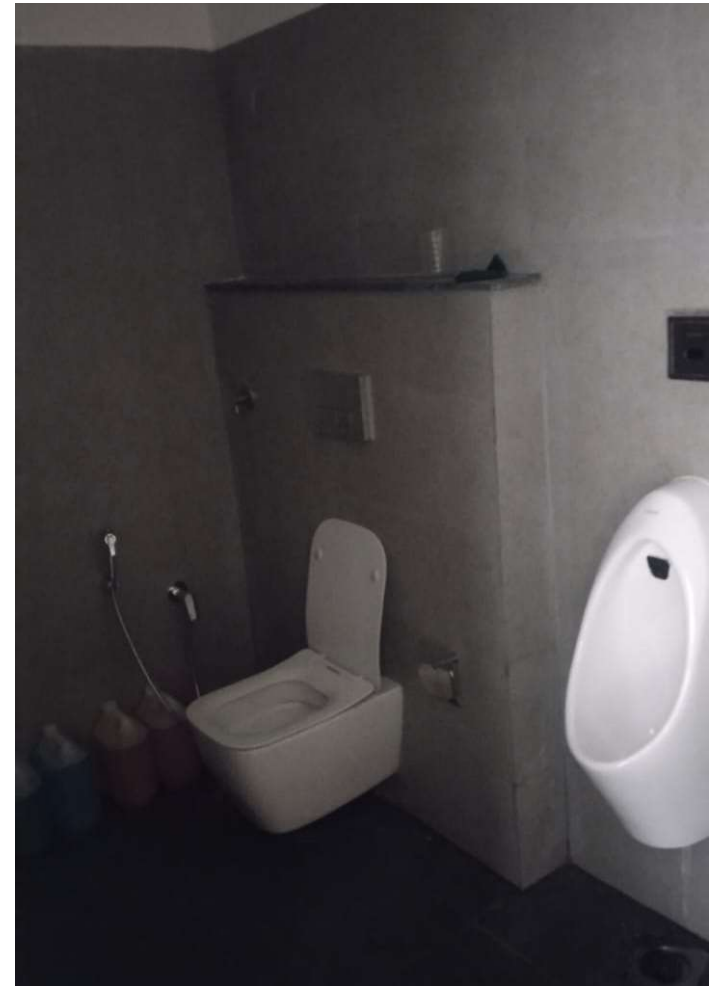
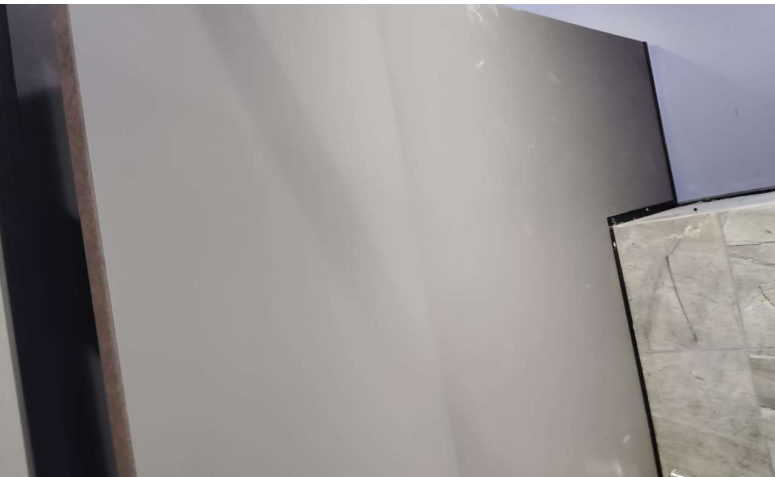




# Odd Configurations



*Modular & Compact Solutions*





**Anash**  
*Modular & Compact Solutions*

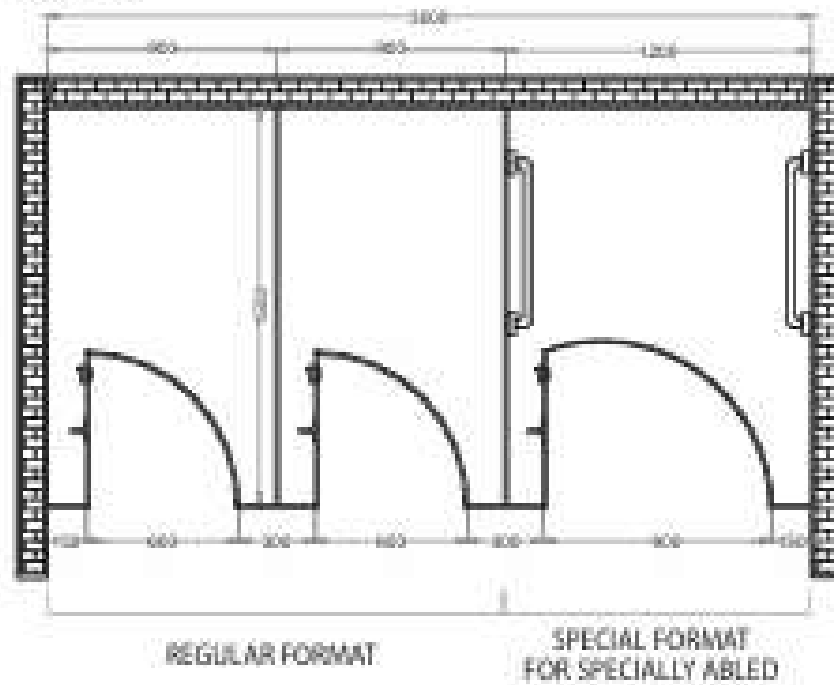


# Typical Plans & Views

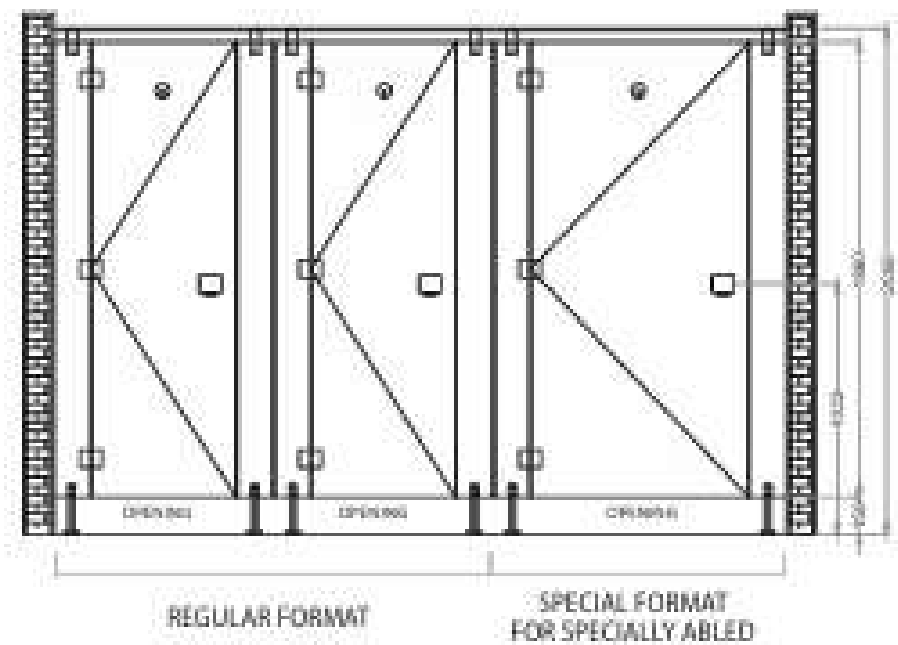


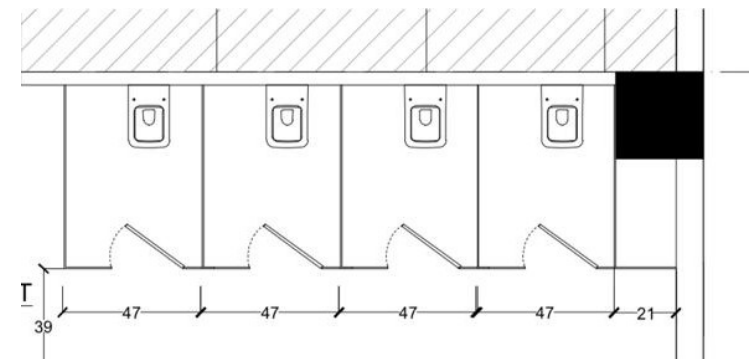
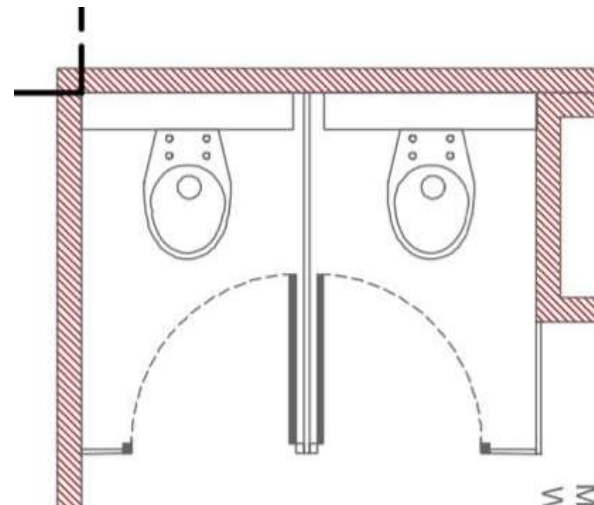
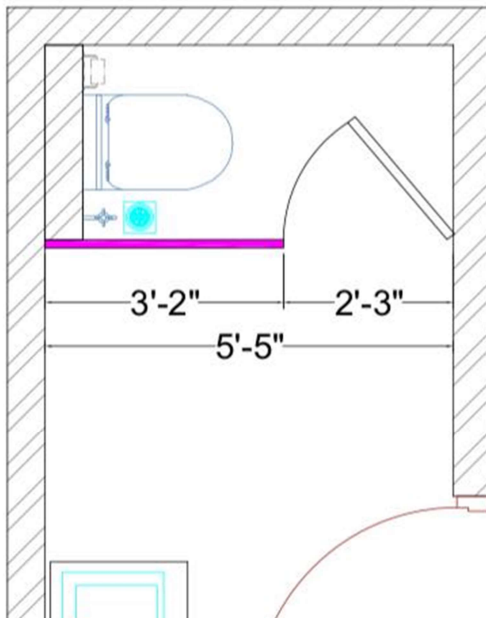
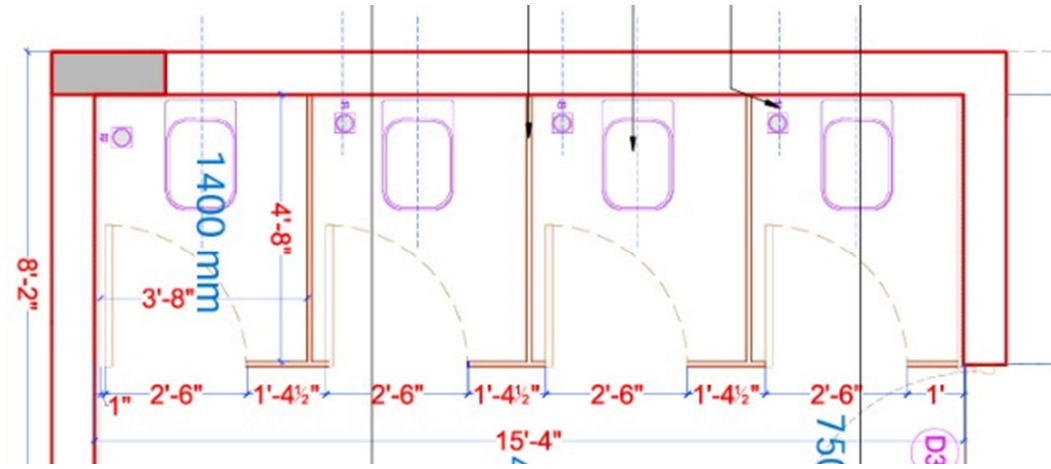
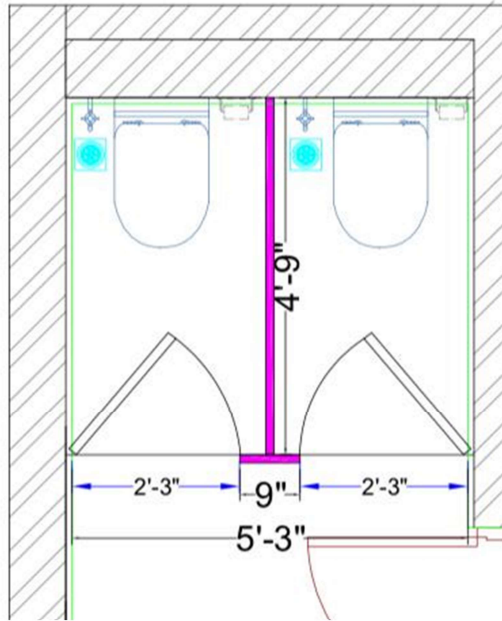
*Modular & Compact Solutions*

TOP VIEW



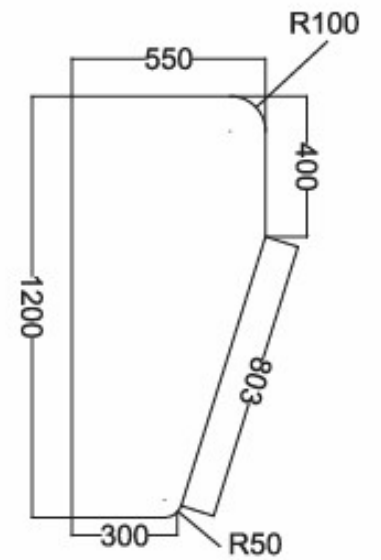
FRONT ELEVATION







# Urinal Partitions



Model No. AUP-2101



Model No. AUP-2106



Model No. AUP-2105



*Modular & Compact Solutions*



Model No. AUP-2103



Model No. AUP-2101



Model No. AUP-2106



Model No. AUP-2102



Model No. AUP-2104

# What We Handover?



- *End Product as per the idea, and visuals*
- *Satisfaction, Happy Feel, Aesthetic Appeal*
- *Value for Money, Long Life Usage*
- *Feel Relaxed, Work Relaxed experience*



**Quality**

**Cost**

**Services**

*Making Your Workplace Happy & Relaxed After!*





*Modular & Compact Solutions*

Modular Furniture - Metal Storage – Chairs – Rest Room Cubicles  
Boltless & Folding Racks – Smart Lift Tables – Worksmart Accessories

**\*24 years of Quality Excellence\***

***\*Referred, Recommended, Recognised\****

anashfurniture@gmail.com

New Delhi

97183 61013 | 81305 01013



@anashfurniture



Anash Furniture



Anash



www.anashfurniture.com